

# SPECHT FAMILY SIMMENTALS



**ANNUAL FALL SALE**

**OCTOBER 5, 2024**

**AT THE FARM**



# CONGRATS!!!

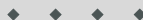


Iowa State  
NOTHING  
COMPARES



SS She's All That 13H - congrats to the Sanny Family!

- 2024 Iowa Simmental Association Field Day - Champion Cow/Calf
- 2024 Polk County Fair - Champion Cow/Calf
- 2024 Iowa State Fair FFA Show - Res Simmental Cow/Calf
- 2024 Iowa State Fair Open Simmental Show - Champion Cow/Calf



SS Echo 5H

Shown every year since being purchased as an open heifer, Echo has grabbed many champion and res titles over the years for the Engelken family. Congrats!



## OFFERING 21 HEAD

- 12 OPEN HEIFERS
- 1 BRED
- 3 4H STEER PROSPECTS
- 5 BULL PROSPECTS



## SALE LOCATION

22823 HEIDERSCHEIT RD, GUTTENBERG, IA  
North out of Holy Cross, IA on Thunder Rd,  
right at 4-way stop onto Heiderscheit Rd.  
First place on the left.



## REGISTRATION PAPERS

All cattle are registered as stated. Registration papers will be transferred to the new owner free of charge upon payment in full.



## SCHEDULE OF EVENTS

Cattle can be viewed at your convenience from now until sale time - please call ahead.

### October 4

3:00 pm til dusk: Cattle available for viewing

### October 5 - Sale Day

9:00 am: Cattle available for viewing

11:00 am: Initial Bids Due

11:30 am: Load and Go on all remaining lots



## EPDs

All EPDs are the most current BOLT at the time of printing conducted by IGS and the American Simmental Association. Please note that EPDs may change from the time the sale catalog is printed until registration papers are transferred.



## VOLUME DISCOUNTS

A volume discount will be offered to any one purchasing multiple head of \$50 per head.



## SALE CONSULTANT

Greg Miller 608-778-8785



## SALE CONTACTS

John 563-870-2043

Matt 563-543-1345

Steve 563-542-7132

Nicholas 563-543-1344

Terry Harder 563-590-5934



Visit [spechtsimmentals.com](http://spechtsimmentals.com) or like us on Facebook for updates!



# OPENS



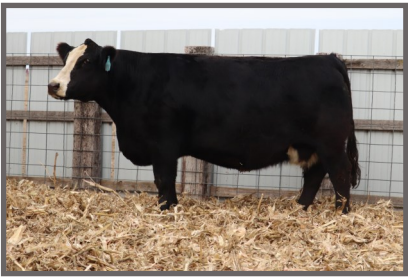
## SS BLACK PEARL 9M

Black, Homo Polled, PB | ASA 4356762 | 2/18/2024

| CE  | BW  | WW   | YW    | MCE | MM   | MWW  | API   | TI   |
|-----|-----|------|-------|-----|------|------|-------|------|
| 9.1 | 3.7 | 84.8 | 131.4 | 4.5 | 17.3 | 59.6 | 115.2 | 77.4 |

HPF Quantum Leap Z952  
SIRE: WLE Copacetic E02  
CMFM Joy 02ZB

HPF Optimizer A512  
DAM: SS Opal  
SS Jewel



Opal - dam

[CLICK HERE FOR VIDEO](#)

Pearl wouldn't be listed first if we didn't think there's something special about her. A great disposition, broke to lead, backed by an awesome cow family, and easy to look at, this Copacetic heifer has a lot of potential for the long term. Pearl's dam is the definition of reliable - she's stuck first AI service 8 years in a row.

**OPENING BID: \$2600**



## SS MISS ICE 6M

Black, Homo Polled, PB | ASA 4356758 | 1/17/2024

| CE   | BW  | WW   | YW    | MCE | MM   | MWW  | API   | TI   |
|------|-----|------|-------|-----|------|------|-------|------|
| 11.3 | 2.1 | 85.3 | 132.1 | 6.4 | 15.1 | 57.7 | 120.6 | 80.1 |

HPF Quantum Leap Z952  
SIRE: WLE Copacetic E02  
CMFM Joy 02ZB

CCR Wide Range 9005A  
DAM: SS Diamond  
SS Opal



Copacetic - sire

[CLICK HERE FOR VIDEO](#)

The only other Copacetic heifer in the sale and out of the same great cow family! Ice has plenty of look with a little added thickness. She has a kid-friendly disposition and is broke. Copacetic cows are doing a great job and Copacetic semen is now hard to find. The opportunity of picking up a daughter will get tough.

**OPENING BID: \$2600**



# OPENS



## SS DAIZEE 1M

Black, Homo Polled, PB | ASA 4356763 | 1/2/2024

| CE   | BW   | WW   | YW    | MCE | MM   | MWW  | API   | TI   |
|------|------|------|-------|-----|------|------|-------|------|
| 15.2 | -1.5 | 72.7 | 101.7 | 7.2 | 17.3 | 53.6 | 143.4 | 80.8 |

WS All-Around Z35  
SIRE: OMF Epic E23  
OMF Time Less B100

WLE Uno Mas X549  
DAM: SS Sundaze  
SS Lola



Sire - Epic

[CLICK HERE FOR VIDEO](#)

Nothing flashy here, but don't overlook this heifer. She started out with a 67lb birth weight and walked across the scale with a 749lb weaning weight. Daizee comes from a great cow family that traces back to the Sweet Pea cow that did so well for us for many, many years.

**OPENING BID: \$2000**



## SS SWEETHEART 8M

Black, Homo Polled, PB | ASA 4356757 | 2/11/2024

| CE   | BW   | WW   | YW    | MCE | MM   | MWW  | API   | TI   |
|------|------|------|-------|-----|------|------|-------|------|
| 13.7 | -0.8 | 77.3 | 114.3 | 7.5 | 20.9 | 59.4 | 120.6 | 80.1 |

WS All-Around Z35  
SIRE: OMF Epic E23  
OMF Time Less B100

DMCC Hitman 116G  
DAM: SS Jules 21K  
SS Sweety



Maternal Sire - Hitman

[CLICK HERE FOR VIDEO](#)

Sweetheart is smaller framed calf out of a first calf heifer. She's deep bodied, structurally correct, and is another calf in the sale with a great disposition. She was more interested in chewing on the girls' sweatshirts and photo props on picture day than getting her photo taken.

**OPENING BID: \$2000**



# OPENS



## SPECHTS TILLIE 41L

Black, Polled, PB | ASA 4356465 | 12/21/2023

| CE   | BW   | WW   | YW    | MCE | MM   | MWW  | API   | TI   |
|------|------|------|-------|-----|------|------|-------|------|
| 13.5 | -0.7 | 77.3 | 114.1 | 6   | 18.6 | 57.1 | 147.1 | 86.4 |

Hooks Eagle 6E  
SIRE: TJ Gold 274G  
TJ 12C

Yardley Utah Y361  
DAM: SS Birdie 4K  
SS Liberty



Sire - Gold

[CLICK HERE FOR VIDEO](#)

A little more age. A little more size. A little more performance. This Gold heifer hit the ground at 69 lbs and turned it into a 793 lb 205-day weight off of a first calf heifer. She was shown once this summer as a 4H heifer and her Dec birthdate will put her in a different class next year. While she's a performance-type heifer, she still has plenty of eye appeal.

**OPENING BID: \$2300**



## SS ALLEYS DREAM 5M

Black, Polled, PB | ASA 4356760 | 1/12/2024

| CE   | BW  | WW   | YW    | MCE | MM   | MWW  | API   | TI   |
|------|-----|------|-------|-----|------|------|-------|------|
| 11.3 | 1.0 | 71.8 | 107.3 | 5.6 | 16.3 | 52.1 | 134.6 | 76.0 |

TESS Black 96X  
SIRE: MFR Dreamboat 3B  
MFR Red Nitty Gritty 16Y

Mr CCF Clarified  
DAM: CNS/HFS/102 Alley 124J  
B&K Alley 124E



Dam - Alley 124J

[CLICK HERE FOR VIDEO](#)

The first heifer we're offering out of Alley 124J since acquiring her in 2022. Watch her video and then watch it again. This Dreamboat daughter has a lot of power. Dreamboat is a bit of a sleeper AI sire. He hasn't been widely used, but we've loved the calves we've had out of him.

**OPENING BID: \$2300**



# OPENS

## SS LUNA 22M

Black, Homo Polled, 3/4 | ASA 4406262 | 3/5/2024

| CE   | BW  | WW   | YW    | MCE | MM   | MWW  | API   | TI   |
|------|-----|------|-------|-----|------|------|-------|------|
| 11.9 | 0.6 | 68.3 | 100.9 | 4.1 | 23.3 | 58.5 | 135.5 | 77.9 |

Silveiras Style 9303  
SIRE: W/C Style 69E (Family Tradition)  
Miss Werning KP 8543U

WLE Uno Mas X549  
DAM: SS Hailey  
SS Stormy



Family Tradition - sire

A 3/4 blood heifer out of the popular Family Tradition bull. This cow family traces back to the beginning for us. Additionally, Lucy has successfully shown a Stormy daughter and grand-daughter at Nationals the last 2 years.

**OPENING BID: \$2300**

## SS PETALS 26M

Black, Polled, PB | ASA 4406263 | 4/14/2024

| CE   | BW   | WW   | YW    | MCE | MM   | MWW  | API   | TI   |
|------|------|------|-------|-----|------|------|-------|------|
| 13.4 | -0.5 | 78.3 | 115.0 | 5.4 | 26.5 | 66.0 | 139.8 | 85.1 |

HTP/SVF Duracell T52  
SIRE: THSF Lover Boy B33  
RP/MP Right to Love 015U

LLSF Vantage Point F398  
DAM: 6/R WBS Special Effect J135  
6/R WBS Harmony F136



Higher Hope - cow family

The baby in the sale - but don't overlook her because of that! She has all the parts and pieces on paper and in person. We value cow families and Petals' dam is a grand-daughter of AJE/HS/MBCC Higher Hope - the 3-time IL State Fair Champion for the Allen Family.

**OPENING BID: \$2000**

## SS LENNOX 24M

Black, Polled, PB | ASA 4406266 | 3/6/2024

| CE  | BW  | WW   | YW    | MCE | MM   | MWW  | API   | TI   |
|-----|-----|------|-------|-----|------|------|-------|------|
| 9.8 | 2.0 | 78.9 | 112.3 | 3.0 | 23.1 | 61.8 | 131.3 | 81.2 |

HTP/SVF Duracell T52  
SIRE: THSF Lover Boy B33  
RP/MP Right to Love 015U

HILB Oracle C033R  
DAM: SS Phoebe 22K  
SS Jessie



Lover Boy - sire

A March Lover Boy calf out of a first calf heifer. This is another cow family that has been around forever for us. We had great luck with our Lover Boy calves over the years. They all seem to get better with age.

**OPENING BID: \$2600**





## HARDER HEIFER #16

Black Blaze, 1/2 blood | ASA Pending | 02/18/2024

SIRE: LLSF Draft Pick

DAM: She's A Lady 1062J (Quantum Leap)

OPENING BID: \$2600



1062J—dam

## HARDER HEIFER #18

Black Blaze, 1/2 blood | ASA Pending | 2/7/2024

SIRE: LLSF Draft Pick

DAM: Commercial Angus

OPENING BID: \$2000



Draft Pick

## HARDER HEIFER #28

Black, 1/2 blood | ASA Pending | 2/22/2024

SIRE: LLSF Draft Pick

DAM: Commercial Angus

OPENING BID: \$2000



Once again this year we have the Harder family as a guest consigner. The heifers here, and the steers later in the catalog, can be registered as 1/2 bloods at the buyers request for no additional cost. These calves are out of a strong group of commercial Angus cows. Heifer #16 is the exception to that - she is out of a unregistered 1/2 blood Simmental cow with a impressive pedigree.

Feel free to call/text Terry at 563-590-5934 with any questions on these calves.

## MARK YOUR CALENDAR

2025 AJSA National Classic

July 6-12, 2025

Madison, Wisconsin





**BRED**



**SS MISS CLEO 8L**

Black, Polled, PB | ASA 4215482 | 1/18/23

| CE  | BW  | WW   | YW    | MCE | MM   | MWW  | API   | TI   |
|-----|-----|------|-------|-----|------|------|-------|------|
| 9.1 | 2.7 | 75.8 | 112.9 | 4.2 | 18.7 | 56.6 | 137.5 | 78.9 |

GW-WBF Substance 820  
SIRE: Hook's Bozeman 8B  
Hook's Will Power 24W

MR NLC Upgrade U8676  
DAM: Sweetie Gal C14 GBCC  
Rubys Magnetic 510R



TJ Gold - service sire

[CLICK HERE FOR VIDEO](#)

The only bred heifer in the sale, but definitely worth the trip! This Bozeman daughter is the right size, easy keeping, and naturally thick. The Gold calves we've had come small and really grow. Not only are you buying a great cow, you could be getting your next herd bull or another replacement female.

Due Jan 21, 2025 to TJ Gold 274G. Vet confirmed. No clean-up bull.

**OPENING BID: \$3500**

**STEERS**

**HARDER STEER #20**

Black Blaze, 1/2 blood | ASA Pending | 2/29/2024

SIRE: LLSF Draft Pick  
DAM: Commercial Angus  
OPENING BID: \$2200



Draft Pick

Again this year, we're offering a few % Simmi steers in the sale. These two steers are from the Harder family. They will register as 1/2 bloods and qualify to show as Simmental steers in any show following IJBBA or AJSA guidelines. Feel free to call/text Terry at 563-590-5934 with any questions on these calves.

**HARDER STEER #22**

Black Blaze, 1/2 blood | ASA Pending | 2/28/2024

SIRE: JASS On The Mark  
DAM: Commercial Angus  
OPENING BID: \$2200



On The Mark

**SS MAGNUS 23M**

Black Blaze, 5/8 blood | ASA 4406261 | 3/5/2024

SIRE: Draft Pick  
DAM: SS Tori (HRF Hairy)  
OPENING BID: \$2200



Maternal sib

This Draft Pick x Hairy calf could be tough to get around next summer in the Simmi division! His white face will only add to the look! Feel free to call Steve at 563-542-7132 with any question on this calf.



# BULLS



LLSF Draft Pick - sire



HPF/HILL Uprising "Saban" - sire



WLE Copacetic - sire

| ASA#    | Name              | DOB     | CE   | BW   | WW   | YW    | MCE | Milk | MWW  | API   | TI   | BW | WW  | Pedigree                       |
|---------|-------------------|---------|------|------|------|-------|-----|------|------|-------|------|----|-----|--------------------------------|
| 4356756 | SS Custom Made 4M | 1/10/24 | 12.1 | 1.7  | 78.2 | 120.8 | 5.9 | 18.7 | 57.7 | 121.3 | 76.6 | 82 | 688 | Copacetic x TJSC Boone Pickens |
| 4356463 | Spechts Saban 10M | 2/22/24 | 10.3 | 3.1  | 75.9 | 111.1 | 3.6 | 20.6 | 58.5 | 106.9 | 72.4 | 91 | 755 | Saban x JASS On The Mark       |
| 4356753 | SS Bear 12M       | 2/24/24 | 13.6 | -0.6 | 74.8 | 116.5 | 7.3 | 16.8 | 54.1 | 149.3 | 83.0 | 76 | 703 | TJ Gold x CCR Wide Range       |
| 4356759 | SS Uprising 11M   | 2/25/24 | 8.3  | 3.3  | 75.5 | 108.3 | 3.3 | 27.8 | 65.5 | 110.1 | 74.9 | 88 | 735 | Saban x WLE Uno Mas            |
| 4356755 | SS Oscar 14M      | 3/16/24 | 12.2 | 0.7  | 78.4 | 114.6 | 4.4 | 14.2 | 53.4 | 120.6 | 77.1 | 83 | 674 | Draft Pick x GLS Declaration   |

While it might be early for some of you to be thinking about your next herd bull, we'll have the bulls on display on sale day. These bulls offer some different options. We have always believed that not every bull is "one-size-fits-all" so let us help you match up the right bull for your herd and goals. If we don't have him - we'll tell you so!

Pricing will be available sale day. In the event that two or more customers express interest in the same bull prior by 11:00 AM on sale day, there will be a bid off between those individuals. After 11:00 AM on sale day, all bulls will be priced first come first served. For bulls purchased in October, the buyer has two options: **OPTION #1:** The bulls are priced to be held by us until March 15, 2025 with \$500 down at purchase. We will continue to grow the bulls out, update them on all shots, and have them semen evaluated; or **OPTION #2:** If the buyer prefers to take possession of the bull immediately, we will take \$400 off the price of the bull and the bull needs to be picked up by November 1. Due to the wide variation in bull development programs, we cannot guarantee breeding soundness of the bull with this option.



**Specht Family Simmentals**  
**22823 Heiderscheit Rd**  
**Guttenberg, IA 52052**

