

SPECHT FAMILY SIMMENTALS



ANNUAL FALL SALE

OCTOBER 7, 2023

AT THE FARM

Welcome!

SPECHT FAMILY SIMMENTALS

This year marks our 40th year of raising Simmental cattle and our 14th year for this sale. We feel this is the deepest set of open heifers we have ever pulled together. Not every one of these calves are geared towards the showing, but everyone is geared towards a long productive future as a cow.

We invite you to make an appointment to stop by early and take your time to sort through the calves. Study them in person and then study them on paper. No matter what you're looking for, we'd be happy to help you sort through the group and find the right fit for your plans.

John



OFFERING 20 HEAD
10 OPEN HEIFERS
2 BREDS
5 4H STEER PROSPECTS
3 BULL PROSPECTS

SALE LOCATION

22823 HEIDERSCHEIT RD, GUTTENBERG, IA
North out of Holy Cross, IA on Thunder Rd,
right at 4-way stop onto Heiderscheit Rd.
First place on the left.



SCHEDULE OF EVENTS

Cattle can be viewed at your convenience
from now until sale time - please call
ahead.

October 6

5:00 pm til dusk: Cattle available for viewing

October 7 - Sale Day

9:00 am: Cattle available for viewing

11:00 am: Bid off on lots with multiple interest

11:30 am: Load and Go on all remaining lots



VOLUME DISCOUNTS

A volume discount will be offered to any
one purchasing multiple head of \$50 per
head.



SALE CONSULTANT

Greg Miller 608-778-8785



SALE CONTACTS

John 563-870-2043

Matt 563-543-1345

Steve 563-542-7132

Nicholas 563-543-1344

Terry Harder 563-590-5934



REGISTRATION PAPERS

All cattle are registered as stated. Registration
papers will be transferred to the new owner free of
charge upon payment in full.



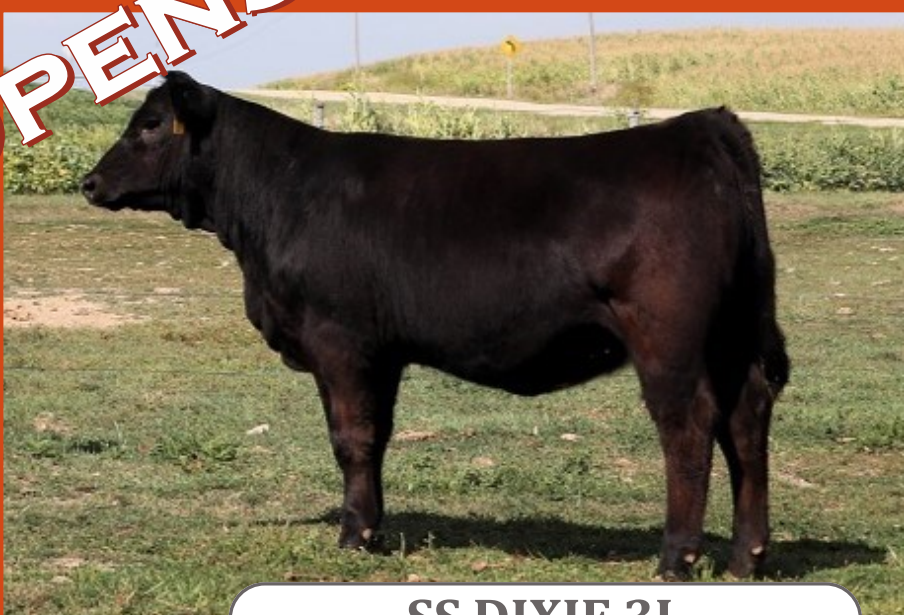
EPDs

All EPDs are the most current BOLT at the time of
printing conducted by IGS and the American Sim-
mental Association. Please note that EPDs may
change from the time the sale catalog is printed
until registration papers are transferred.



Visit spechtsimmentals.com or like us on Facebook for updates!

OPENS



SS DIXIE 3L

Black, Homo Polled, PB | ASA 4215476 | 1/7/2023

CE	BW	WW	YW	MCE	MM	MWW	API	TI
8.9	3.5	74.8	107.2	3.5	2.6	39.9	117.0	69.3

GCC Hard As Steel 144W
SIRE: Yardley Utah Y361
Miss Yardley T170

CCR Wide Range 9005A
DAM: SS Whimsy
SS Carly



Utah - sire

[CLICK HERE FOR VIDEO](#)

Starting off with tried and true genetics. Utah daughters have proven to be as functional as they are easy to look at. With Wide Range on the maternal side, this heifer should have years of productivity in front of her.

OPENING BID: \$2500



SS MISS CLEO 8L

Black, Polled, PB | ASA 4215482 | 1/18/2023

CE	BW	WW	YW	MCE	MM	MWW	API	TI
9.1	2.7	77.5	115.2	4.2	18.5	57.2	139.8	79.3

GW-WBF Substance
SIRE: Hooks Bozeman 8B
Hooks Will Power 24W

MR NLC Upgrade U8676
DAM: Sweetie Gal C14 GBCC
Rubys Magnetic 510R



Bozeman - sire

[CLICK HERE FOR VIDEO](#)

This is a heifer to build a herd around! Take a moment to watch her video. Cleo's dam was a big, soggy, Upgrade cow that traces back to Ruby's Double R Miss Cleo. We feel there's a lot of potential with this heifer.

OPENING BID: \$3000

OPENS



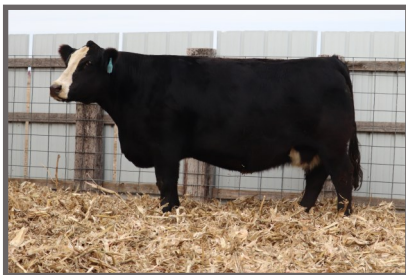
SS LADY PEARL 7L

Black, Homo Polled, PB | ASA 4215485 | 1/11/2023

CE	BW	WW	YW	MCE	MM	MWW	API	TI
9.3	2.5	85.8	128.8	3.3	27.0	69.9	134.4	82.4

HTP/SVF Duracell T52
SIRE: THSF Lover Boy B33
RP/MP Right To Love 015

HPF Optimizer A512
DAM: SS Opal
SS Jewel



Opal - dam

[CLICK HERE FOR VIDEO](#)

A blaze faced Lover Boy daughter. Pearl continues to get nicer every day. Her dam is the definition of reliable - she's been AI'd 7 times for 7 calves, all falling within a 20 day window. That's the type of thing a profitable cow does.

OPENING BID: \$2200



SS LADY BURBERRY 4L

Black, Homo Polled, PB | ASA 4215478 | 1/8/2023

CE	BW	WW	YW	MCE	MM	MWW	API	TI
10.7	2.5	74.0	106.7	3.9	13.7	50.6	116.7	70.1

GCC Hard As Steel 144W
SIRE: Yardley Utah Y361
Miss Yardley T170

TJSC Boone Pickens 46C
DAM: SS Fancy Pants
SS Opal



Fancy - dam

[CLICK HERE FOR VIDEO](#)

Check out this baldy! Fancy has raised some of our best heifers and this year is no exception. Burberry is straight in her lines, long spined and feminine fronted. Utah heifers have had a lot of success in the showring and the pasture.

OPENING BID: \$2800

OPENS



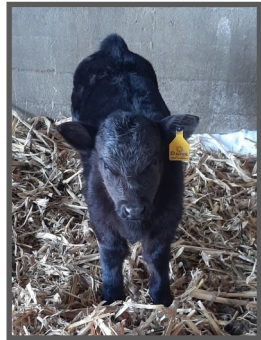
SS DAIZEE 2L

Black, Homo Polled, PB | ASA 4215486 | 1/3/2023

CE	BW	WW	YW	MCE	MM	MWW	API	TI
14.8	-1.5	66.2	91.0	6.8	20.1	53.1	147.8	79.6

OMF Epic E27
 SIRE: Schooley Standout 27G
 CLRS Beauty Queen 420

WLE Uno Mas X549
 DAM: SS Sundaze
 SS Lola



Daizee as a calf

[CLICK HERE FOR VIDEO](#)

Daizee is so long it's hard to appreciate her rib and natural thickness until you see her in person. She's been one that's been picked out all summer. We worked with her as a back up for our state fair string, so she is broke and would be ready to show with just a little more work.

OPENING BID: \$2200



SPECHTS ESSENCE 13L

Black, Homo Polled, PB | ASA 4195542 | 2/6/2023

CE	BW	WW	YW	MCE	MM	MWW	API	TI
14.1	-0.6	74.8	107.9	7.3	23.4	60.8	143.7	82.7

OMF Epic E27
 SIRE: Schooley Standout 27G
 CLRS Beauty Queen 420

WRS Emergent E715
 DAM: SLFF/SS Gypsy Soul 31J
 JS Gypsy 44G



Dam - Gypsy Soul

[CLICK HERE FOR VIDEO](#)

This is the heifer calf of Lucy's Champion Cow/Calf pair at the Iowa Simmental Field Day and Grand Champion Cow/Calf pair at the Dubuque County Fair. She's so quiet she didn't feel like lifting her head on picture day no matter how much noise we made. She's the type that's going to make a big-middled, easy keeping, cow.

OPENING BID: \$1800

OPENS



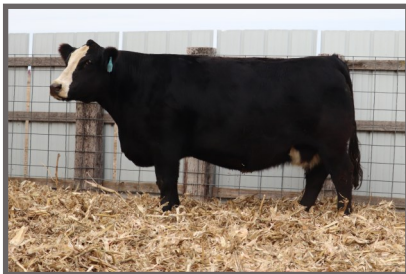
SS MISS ICE 6L

Black, Homo Polled, PB | ASA 4215480 | 1/11/2023

CE	BW	WW	YW	MCE	MM	MWW	API	TI
9.4	3.1	80.9	116.9	3.8	8.5	48.9	119.3	73.2

GCC Hard As Steel 144W
 SIRE: Yardley Utah Y361
 Miss Yardley T170

CCR Wide Range 9005A
 DAM: SS Diamond
 SS Opal



Opal - grand-dam

[CLICK HERE FOR VIDEO](#)

Ice is another heifer in the sale that is going to become one of those big-middled, easy keeping, kinda cows. We had her at the Iowa State Fair, so she's ready for the road. But, her true success will come as a productive cow – take note of her pedigree compared to Lady Burberry and Lady Pearl listed earlier in the catalog.

OPENING BID: \$2000

SS SALTY LADY 28L

Homo Black, Homo Polled, PB | ASA 421141 | 4/17/2023

CE	BW	WW	YW	MCE	MM	MWW	API	TI
10.7	0.7	71.0	104.6	4.6	24.7	60.1	140.1	77.3

OMF Epic E27
 SIRE: Schooley Standout 27G
 CLRS Beauty Queen 420

Wheatland Bull 680S
 DAM: SS Sweety
 BS Miss Legacy HPHB 8R



Standout - sire

The baby in the sale - but don't overlook her because of that! This is likely the last heifer we will ever offer out of our 680S daughter, Sweety, as she'll be 14 this spring.

OPENING BID: \$2200

SS CORA 26L

Black, Polled, PB | ASA 421134 | 3/18/2023

CE	BW	WW	YW	MCE	MM	MWW	API	TI
11.5	0.8	67.0	99.3	3.2	18.5	52.0	123.8	72.5

Remington Lock N Load
 SIRE: DMCC/WOOD Fully Loaded
 Aubreys Black Blaze III

TLLC One Eyed Jack
 DAM: SS Quinn
 SS Jazz



Fully Loaded - sire

Cora is a solid black, Fully Loaded, daughter. She's a maternal sib to the Simmental steer shown by the Vaske family this summer. Her 6-year old dam has done a good job for us and we expect Cora to follow suit.

OPENING BID: \$2500

OPENS

SS MISSY 21L

Black, Homo Polled, 1/2 blood | ASA 4241137 | 3/3/2023

CE	BW	WW	YW	MCE	MM	MWW	API	TI
9.0	2.0	75.1	116.9	2.3	19.5	56.9	129.9	79.1

PVF Blacklist 7077
 SIRE: PVF Marvel 9185
 PVF Missie 5245

WLE Uno Mas ZX549
 DAM: SS Hailey
 SS Stormy



Marvel - sire

SELLING CHOICE!

Steve only had 2 percentage heifers this year. While these two are made different, both are good enough to keep so he's offering the high bidder the choice between 21L and 24L. The buyer takes their pick and Steve is putting the other heifer back in the herd.

OPENING BID: \$2500

SS MISS SECRET 24L

Black, Polled, 5/8 blood | ASA 4241136 | 3/11/2023

CE	BW	WW	YW	MCE	MM	MWW	API	TI
12.4	-0.2	66.3	96.2	5.5	19.1	52.2	123.8	72.3

HTP/SVF Duracell T52
 SIRE: THSF Lover Boy B33
 RP/MP Right To Love 015

HRF Hairy
 DAM: SS Tori
 SS Jazz



Lover Boy - sire

The Ultimate Combo! BOXEL JET PACK blower & UBER showbox



- BLACK
- RED
- MAROON
- ORANGE
- COBALT
- NAVY
- YELLOW
- GREEN
- PURPLE
- TEAL
- HOT PINK

Check them out sale day! We'll have a combo on display as well as a 5' Dolly showbox, Weekender box, and The Green Stuff products.

CUSTOM TAGS

Laser engraved Ritchey tags provide customization and durability in a wide variety of colors.



We carry the full line of Green Stuff hair products!

BREDS



SS NINA 12K

Black, Homo Polled, PB | ASA 4064095 | 2/6/2022

CE	BW	WW	YW	MCE	MM	MWW	API	TI
7.2	3.6	82.7	130.5	2.8	10.9	52.2	111.1	75.3

Heads Up 20X ET
SIRE: LLSF Uprising Z925
LLSF Untouchable U925

CCR Wide Range 9005A
DAM: SS Whimsy
SS Carly



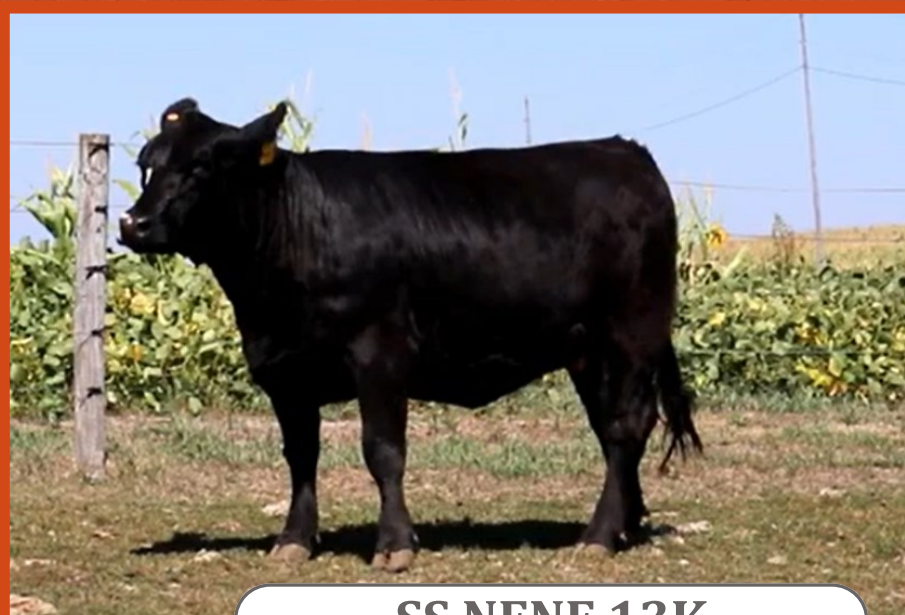
TJ Gold - service sire for 12K + 13K

[CLICK HERE FOR VIDEO](#)

There's been more than one discussion around here about which of these bred is the better. Nina shows more of the characteristics of Wide Range. She's slightly larger and has more of a maternal front third compared to her twin sister. Her mating to the calving ease sire, TJ Gold, is sure to make for a profitable first calf.

Due March 20, 2024 to TJ Gold 274G. Vet confirmed. No clean-up bull.

OPENING BID: \$3200



SS NENE 13K

Black, Homo Polled, PB | ASA 4064109 | 2/6/2022

CE	BW	WW	YW	MCE	MM	MWW	API	TI
7.2	3.6	82.7	130.5	2.8	10.9	52.2	111.1	75.3

Heads Up 20X ET
SIRE: LLSF Uprising Z925
LLSF Untouchable U925

CCR Wide Range 9005A
DAM: SS Whimsy
SS Carly



Dixie - maternal sister

[CLICK HERE FOR VIDEO](#)

NeNe shows more of the characteristics of Uprising than her twin sister. She's the sleeker fronted of the two and is slightly more feminine made. The small white stripe on the side of her face highlights her in a crowd. She's carrying a calf by TJ Gold.

Due February 8 to TJ Gold 274G. Vet confirmed. No clean-up bull.

OPENING BID: \$3200

STEERS

HARDER STEER #18

Black Blaze, 1/2 blood | ASA Pending | Early March

SIRE: JASS On The Mark

DAM: Commercial Angus

OPENING BID: \$2000



On The Mark

HARDER STEER #19

Black Blaze, 1/2 blood | ASA Pending | Early March

SIRE: JASS On The Mark

DAM: Commercial Angus

OPENING BID: \$2000



On The Mark

HARDER STEER #20

Black, 1/2 blood | ASA Pending | Early March

SIRE: JASS On The Mark

DAM: Commercial Angus

OPENING BID: \$2000



On The Mark

The last few years we've offered a few "County Fair" type steers in the sale with great success for our customers. This year, the Harder family is helping us offer another solid set of steers by offering 3 steers sired by On The Mark. They will register as 1/2 bloods and qualify to show as Simmental steers in any show following IJBBA or AJSA guidelines. Feel free to call/text Terry at 563-590-5934 with any questions on these calves.

SS STANDOUT 16L

Black Baldy, PB | ASA 4215477 | Early April

SIRE: Schooley Standout 27G

[CLICK HERE FOR VIDEO](#)

DAM: SSS Cox Cow 33E

This neat little PB baldy could be a lot of fun for someone. His sisters have been highlights in past sales. He hasn't been worked with much yet, but definitely showing a kid-friendly personality.



OPENING BID: \$1800

SS BANDIT 15L

Black PB | ASA 4215483 | Late March

SIRE: WLE Copacetic

[CLICK HERE FOR VIDEO](#)

DAM: SS Cayenne

A well made PB calf. You can see from his photo that he's been tied and worked with a bit. He fits the same mold as steers we've sold in the past - expect him to grow and show well.



OPENING BID: \$1800

BULLS



Dreamboat - sire



Lover Boy - sire



Copacetic - sire

ASA#	Name	DOB	CE	BW	WW	YW	MCE	Milk	MWW	API	TI	BW	WW	Pedigree
4215487	SS Fenix 9L (PB)	1/24/23	7.4	3.4	73.2	112.6	3.9	23.2	59.7	130.7	74	89		MFR Dreamboat 3B x Longs Shear Envy
4241139	SS Romeo 23L (3/4)	3/10/23	12.2	-0.2	77.2	114.2	5.2	20.5	59.1	131.3	80.5	75		THSF Lover Boy x GLS Declaration
4241140	SS Samson 25L (PB)	3/11/23	10.9	2	87	132.7	3.8	22.8	66.2	120.9	79.6	75		WLE Copacetic x HPF Optimizer

While it might be early for some of you to be thinking about your next herd bull, we'll have the bulls on display on sale day. These bulls offer some different options. We have always believed that not every bull is "one-size-fits-all" so let us help you match up the right bull for your herd and goals. If we don't have him - we'll tell you so!

Pricing will be available sale day. In the event that two or more customers express interest in the same bull prior to sale day, the bull will be auctioned off at 11:00 am on sale day. After that time, all bulls will be priced first come first served. For bulls purchased in October, the buyer has two options: **OPTION #1:** The bulls are priced to be held by us until March 15, 2024 with \$500 down at purchase. We will continue to grow the bulls out, update them on all shots, and have them semen evaluated; or **OPTION #2:** If the buyer prefers to take possession of the bull immediately, we will take \$400 off the price of the bull and the bull needs to be picked up by November 1. Due to the wide variation in bull development programs, we cannot guarantee breeding soundness of the bull with this option.

NOTES:

Specht Family Simmentals
22823 Heiderscheit Rd
Guttenberg, IA 52052

